



SHEFFIELD

Artist Rendering

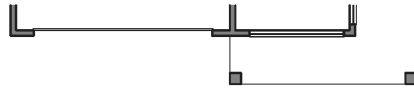
DIAMOND

TOTAL AREA: 3,854 SQ.FT. (Sitting Room), 3,838 SQ.FT. (4 Bedroom)

PRELIMINARY



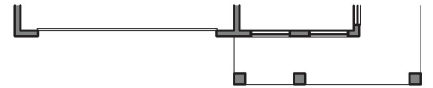
DIAMOND 'B' - UPPER FLOOR



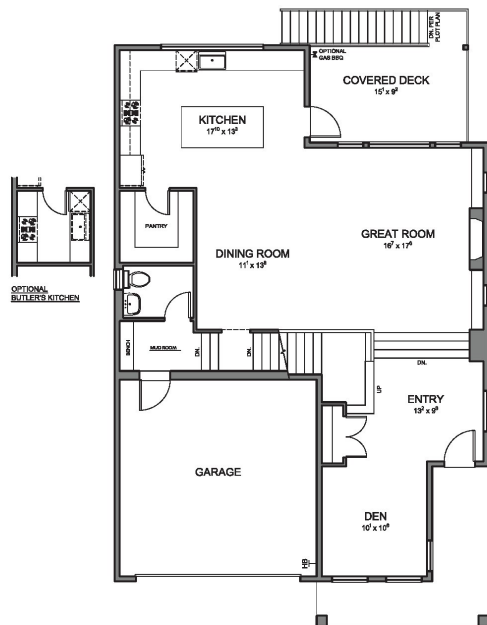
DIAMOND 'B' - MAIN FLOOR



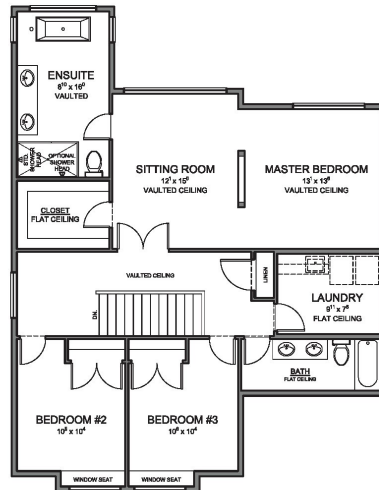
DIAMOND 'C' - UPPER FLOOR



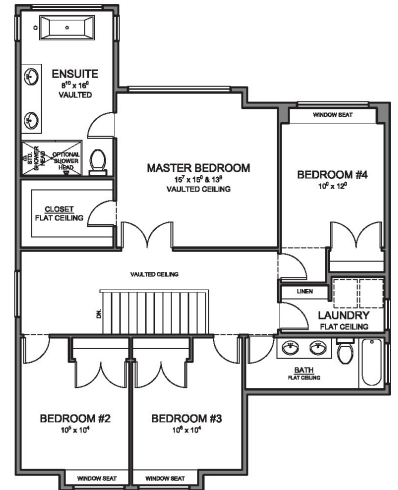
DIAMOND 'C' - MAIN FLOOR



MAIN FLOOR PLAN
1286 FT.²
BASED ON DIAMOND 'A' ELEVATION



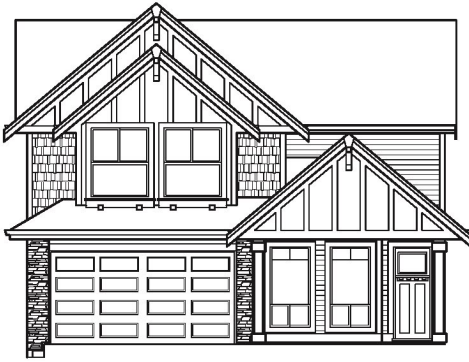
UPPER FLOOR PLAN - SITTING ROOM
1282 FT.²
BASED ON DIAMOND 'A' ELEVATION



UPPER FLOOR PLAN - 4 BEDROOM
1266 FT.²
BASED ON DIAMOND 'A' ELEVATION



The purchaser is advised that these plans and or elevations are subject to change at the sole discretion of Morningstar Sheffield Homes Ltd. Pending conversion to proper working drawings/construction documents. Specific room dimensions, floor areas, and or individual features/elements may also be subject to change at the sole discretion of Morningstar Sheffield Homes Ltd. Morningstar Sheffield Homes Ltd. reserves the right to modify and or affect changes to meet requirements of the City of Coquitlam, conform to applicable City of Coquitlam by-laws, registered design guidelines, covenants and the B.C. Building Code. E.&O.E.



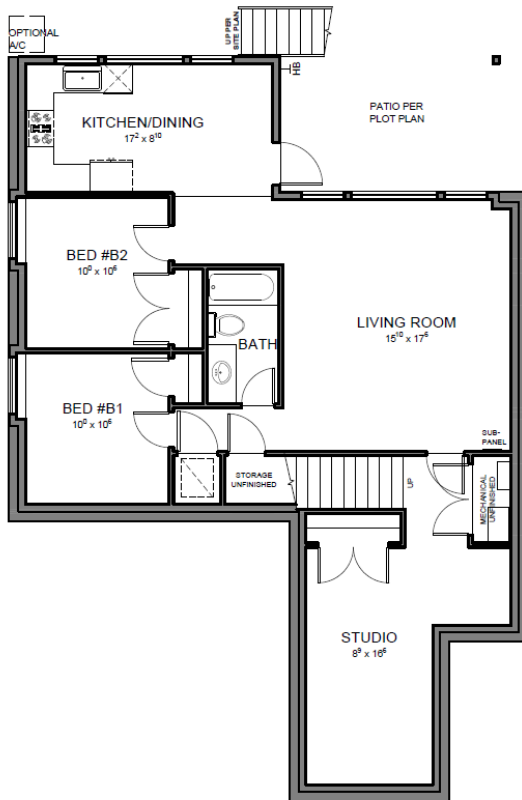
DIAMOND 'A'



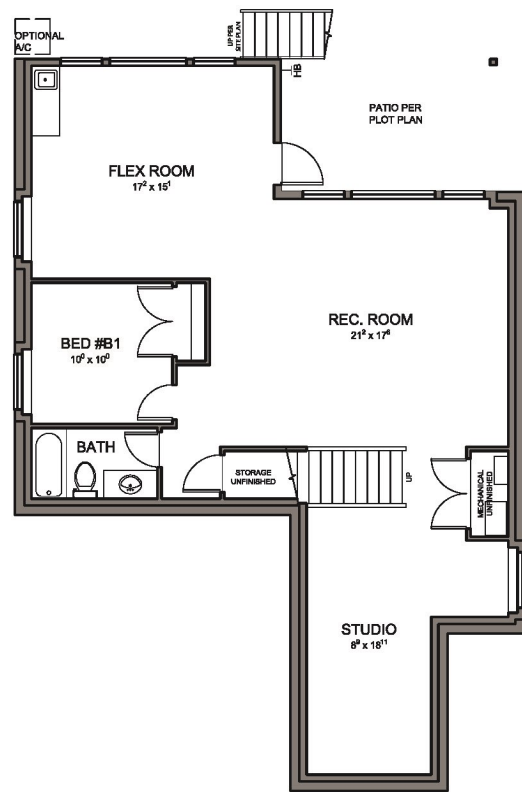
DIAMOND 'B'



DIAMOND 'C'



BASEMENT PLAN - SECONDARY SUITE
 SUITE AREA: 913 FT.²
 TOTAL FLOOR AREA: 1286 FT.²



BASEMENT PLAN - DELUXE FINISHED
 1286 FT.²