

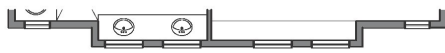


SHEFFIELD

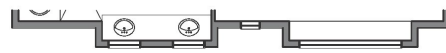
Artist Rendering

JADE
TOTAL AREA: 3,469 SQ.FT.

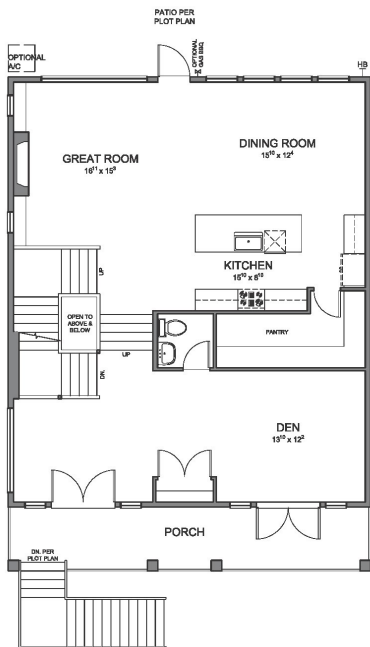
PRELIMINARY



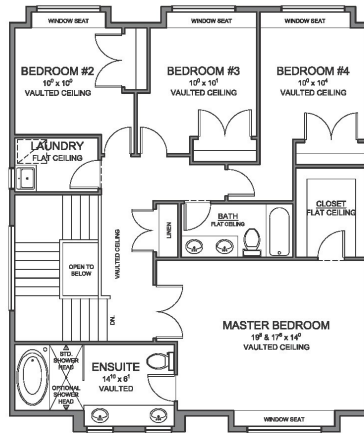
JADE 'B' - UPPER FLOOR



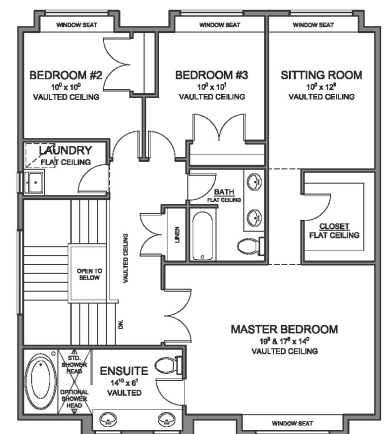
JADE 'C' - UPPER FLOOR



MAIN FLOOR PLAN
1361 FT.²



UPPER FLOOR PLAN - 4 BEDROOMS
1165 FT.²
BASED ON JADE 'A' ELEVATION



UPPER FLOOR PLAN - SITTING ROOM
1165 FT.²
BASED ON JADE 'A' ELEVATION



The purchaser is advised that these plans and or elevations are subject to change at the sole discretion of Morningstar Sheffield Homes Ltd. Pending conversion to proper working drawings/construction documents. Specific room dimensions, floor areas, and or individual features/elements may also be subject to change at the sole discretion of Morningstar Sheffield Homes Ltd. Morningstar Sheffield Homes Ltd. reserves the right to modify and or affect changes to meet requirements of the City of Coquitlam, conform to applicable City of Coquitlam by-laws, registered design guidelines, covenants and the B.C. Building Code. E.&O.E.



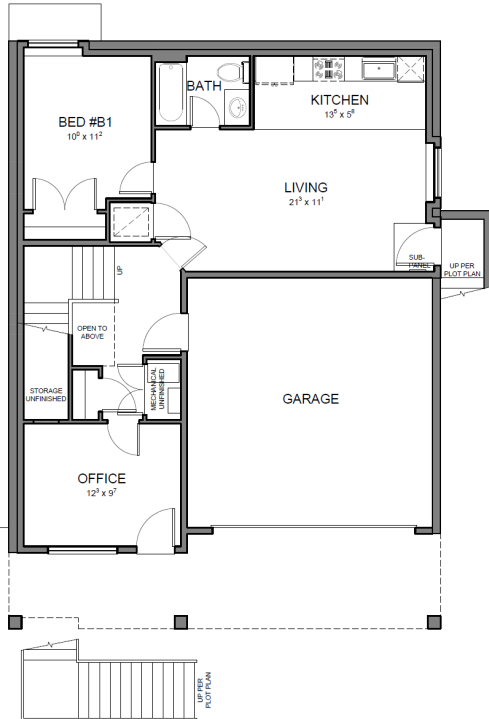
JADE 'A'



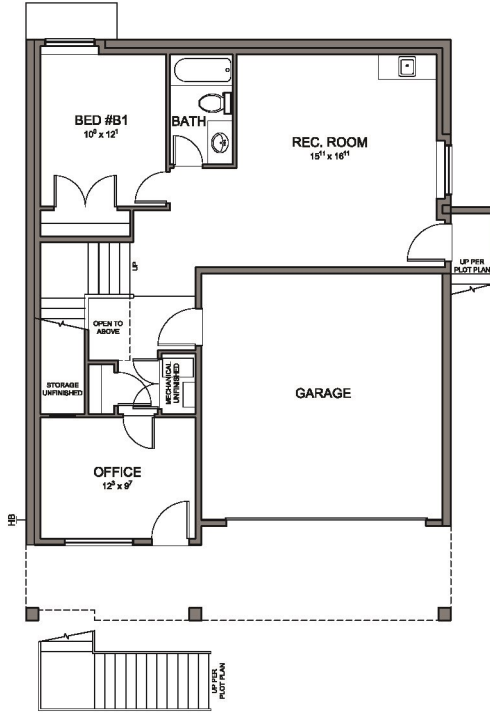
JADE 'B'



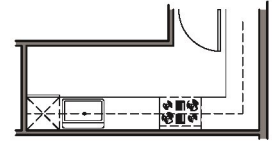
JADE 'C'



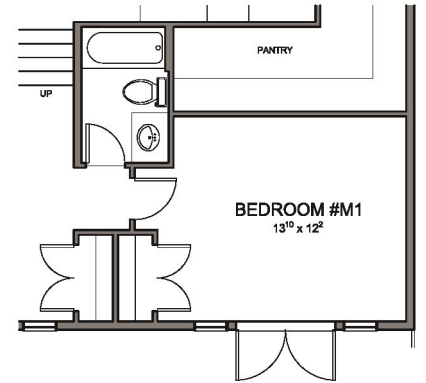
BASEMENT PLAN - SECONDARY SUITE
 SUITE AREA: 596 FT.²
 TOTAL FLOOR AREA: 943 FT.²



BASEMENT PLAN - DELUXE FINISHED
 943 FT.²



OPTIONAL BUTLER'S KITCHEN



OPTIONAL MAIN FLOOR BEDROOM & FULL BATHROOM