

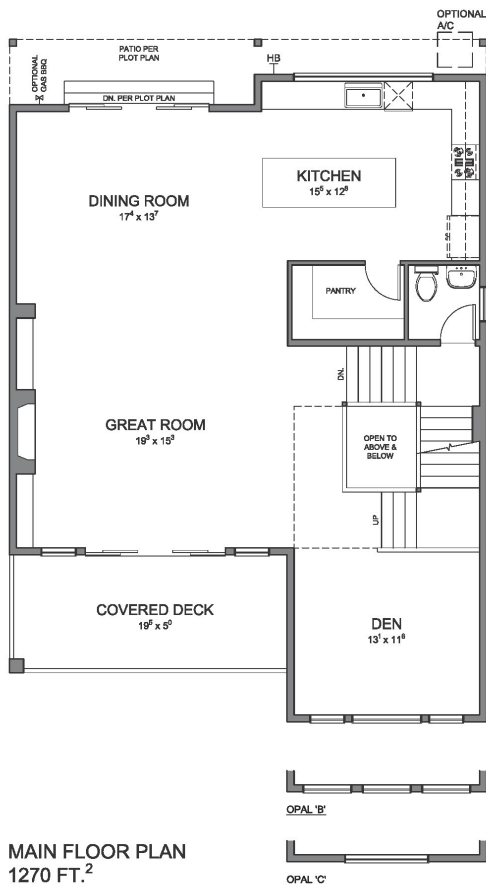


# SHEFFIELD

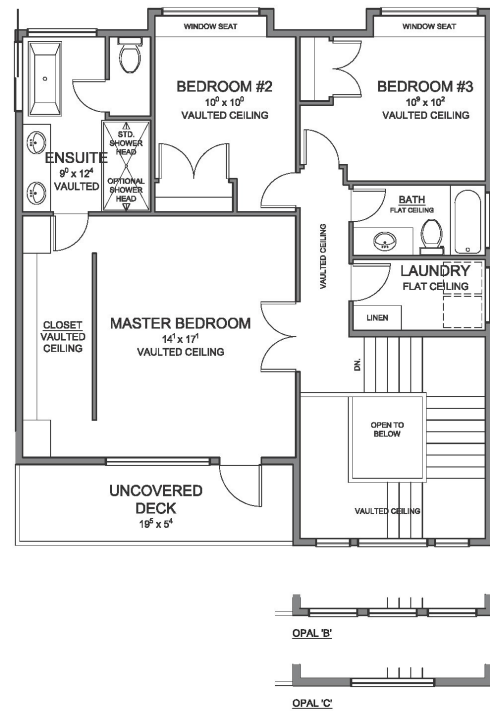
Artist Rendering

**OPAL**  
TOTAL AREA: 3,314 SQ.FT.

**PRELIMINARY**



**MAIN FLOOR PLAN**  
1270 FT.<sup>2</sup>



**UPPER FLOOR PLAN**  
967 FT.<sup>2</sup>



The purchaser is advised that these plans and or elevations are subject to change at the sole discretion of Morningstar Sheffield Homes Ltd. Pending conversion to proper working drawings/construction documents. Specific room dimensions, floor areas, and or individual features/elements may also be subject to change at the sole discretion of Morningstar Sheffield Homes Ltd. Morningstar Sheffield Homes Ltd. reserves the right to modify and or affect changes to meet requirements of the City of Coquitlam, conform to applicable City of Coquitlam by-laws, registered design guidelines, covenants and the B.C. Building Code. E.&O.E.



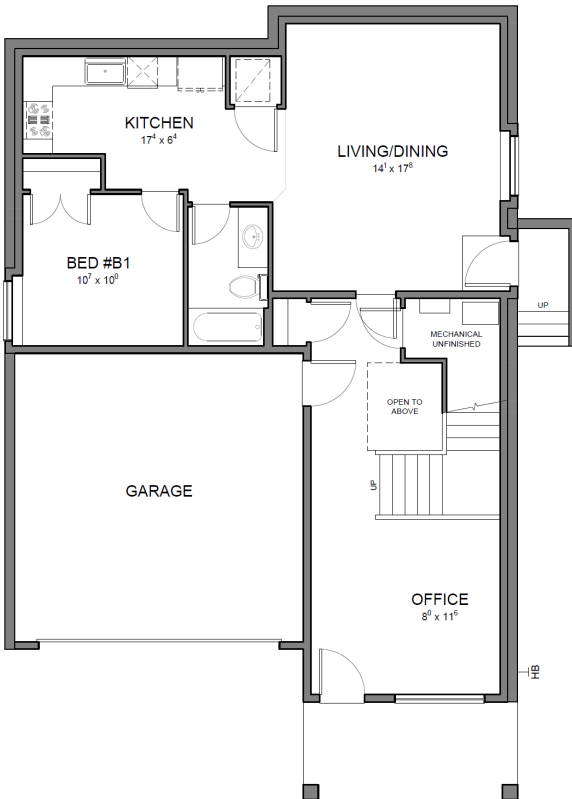
OPAL 'A'



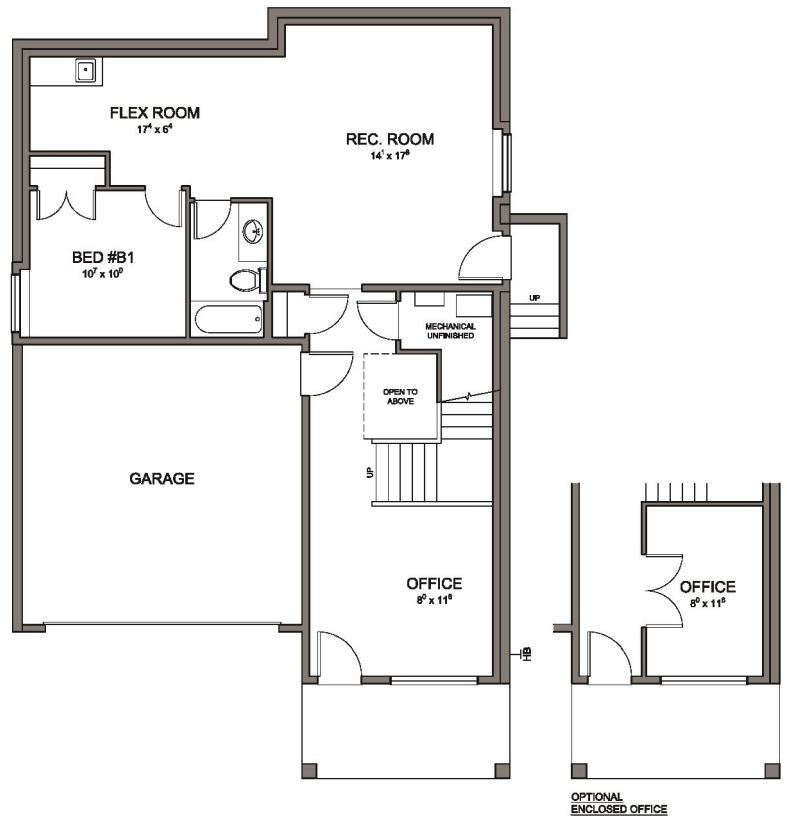
OPAL 'B'



OPAL 'C'



**BASEMENT PLAN - SECONDARY SUITE**  
 SUITE AREA: 678 FT.<sup>2</sup>  
 TOTAL FLOOR AREA: 1077 FT.<sup>2</sup>



**BASEMENT PLAN - DELUXE FINISHED**  
 1077 FT.<sup>2</sup>