



THE PALLISER

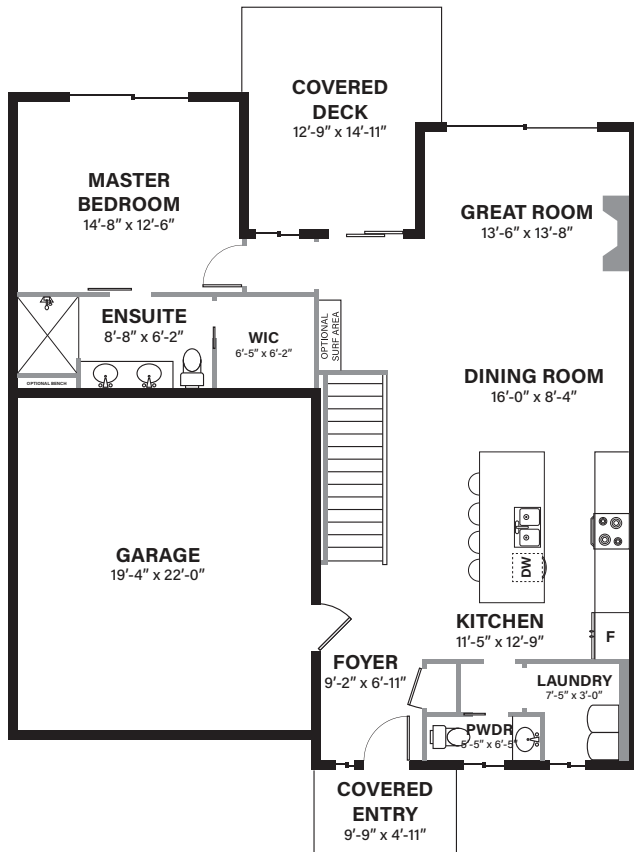
Features

2+ BEDROOM | 2.5 BATHROOM

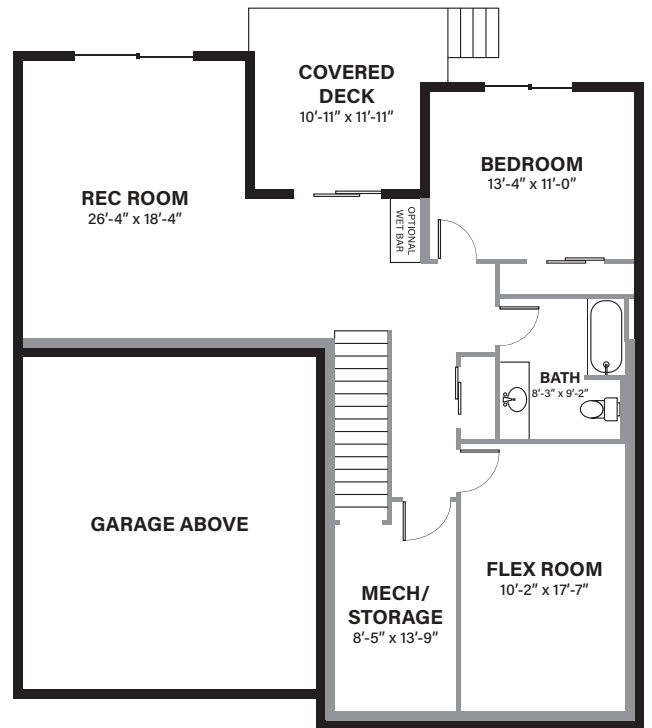
MAIN LEVEL 1181 SQ. FT. | WALK-OUT LEVEL 799 SQ. FT.

LIVING SPACE | 1980 SQ. FT.

MAIN LEVEL



WALK-OUT LEVEL



In a continuing effort to improve our product, we reserve the right to modify or change the plans and specifications without notice. Floor plans are conceptual marketing drawings only. All dimensions and sizes are approximate. E&OE.