



ROWHOME G



BRIGHTON WEST
WILLOUGHBY



FOXRIDGE
HOMES

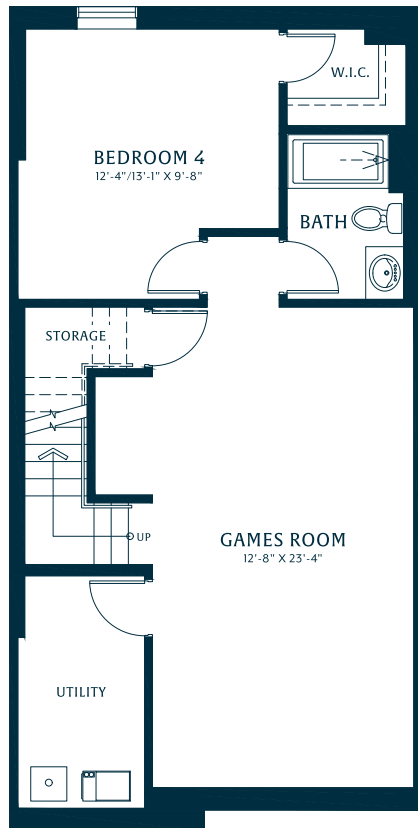
A QUALICO Company

**HELPING BUILD
BETTER CITIES™**

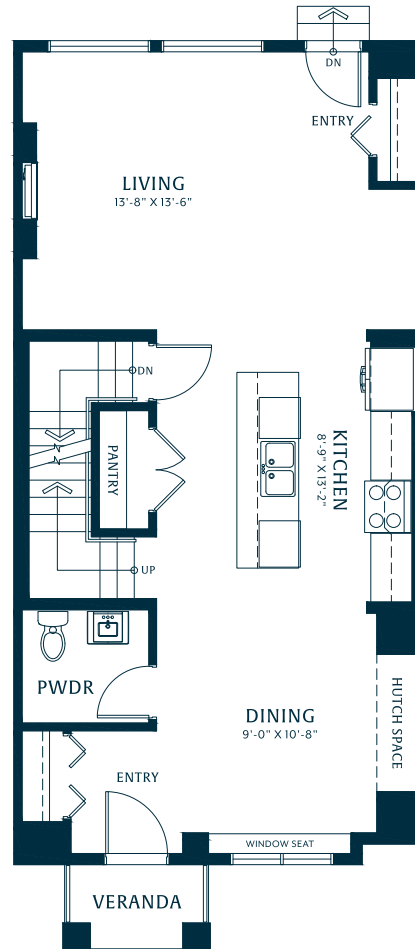


ROWHOME G

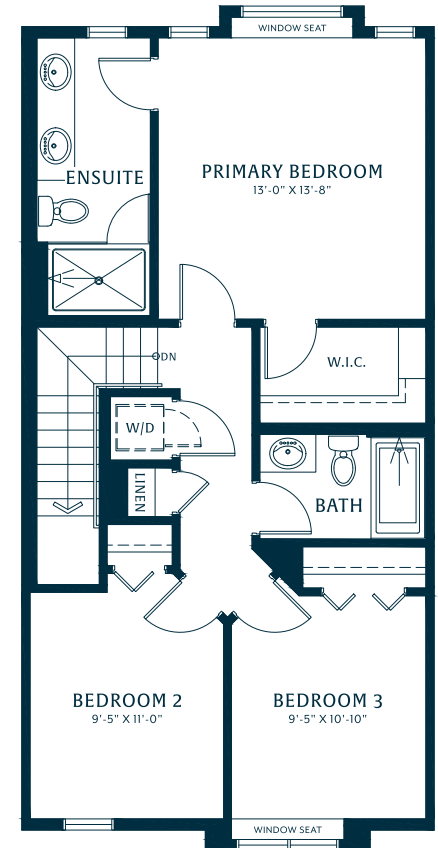
4 BEDROOMS, 3.5 BATHROOMS 2,312 SF (APPROX)



LOWER
790 SF



MAIN
797 SF



UPPER
725 SF

FEATURES MAY VARY FROM HOME TO HOME DEPENDING ON FLOOR PLANS AND LOCATION. BUILDER RESERVES THE RIGHT TO MODIFY PLANS, SPECIFICATIONS, FEATURES AND PRICES. ACTUAL FLOOR PLANS AND SQUARE FOOTAGE MAY VARY SLIGHTLY. ALL SIZES AND DIMENSIONS ARE APPROXIMATE, SOME MINOR CHANGES MAY OCCUR. RENDERING IS ARTISTIC REPRESENTATION ONLY. E.&O.E.